



UNIVERSITY  
of ALASKA  
*Many Traditions One Alaska*

# CHATANIKA DRIVE PARCEL DEVELOPMENT PLAN FAIRBANKS, ALASKA

The University of Alaska (“University”) intends to remove a residential structure from an approximately 2-acre parcel located off Chatanika Drive, north of the UAF Campus. In addition, the University intends to replat the Chatanika Drive parcel and an adjoining parcel to create one lot totaling approximately 4.5 acres in size when complete. The University plans to construct a parking lot on the new larger parcel to provide parking for the existing University House facility also on the same parcel. Both parcels are zoned Rural Residential (RR).

Parties interested in commenting on this disposal plan must submit written comments to the University through its Land Management office by fax at (907) 786-7733, by email at [ua-land@alaska.edu](mailto:ua-land@alaska.edu) or at the address listed below, by no later than **5:00 P.M. on Tuesday, February 19, 2019** to be considered.

This development plan is effective as long as the University owns the parcel.

## LEGAL DESCRIPTION AND PARCEL NUMBER

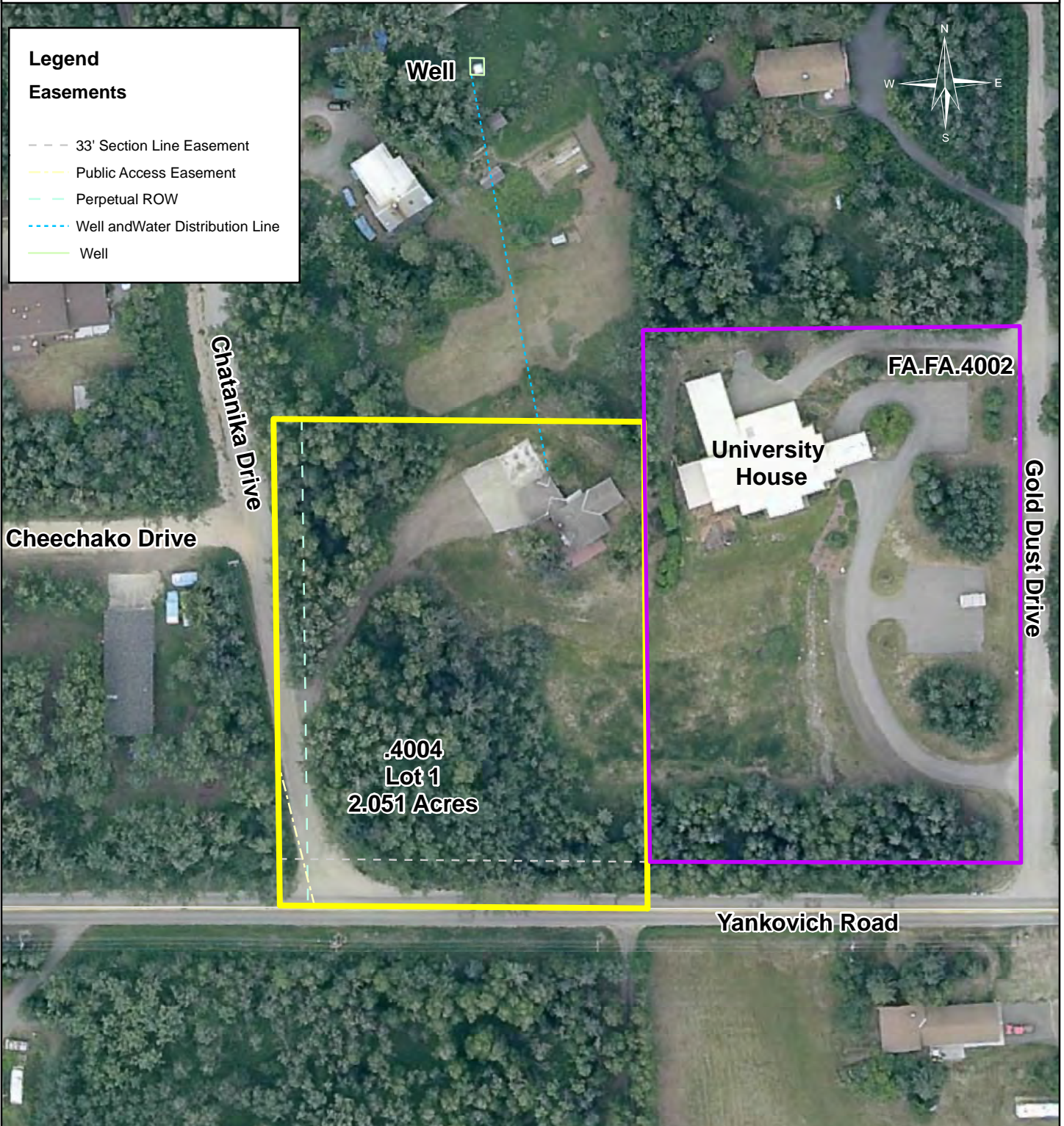
<u>PARCEL#</u>	<u>AREA</u>	<u>SUBDIVISION</u>	<u>LOT</u>	<u>ACRES</u>
FA.FA.4004	Fairbanks	Salisbury	1	2.05
FA.FA.4002	Fairbanks	T1N, R1W, S30	PTN SW4	2.47

CONTACT: Laurie Swartz  
Phone: (907) 450-8133  
Email: [lkswartz@alaska.edu](mailto:lkswartz@alaska.edu)

Facilities and Land Management  
2025 Yukon Drive, Suite 106  
Fairbanks, Alaska 99775-5280  
Website: [www.ualand.com](http://www.ualand.com)

# Chatanika Drive Parcel Development Plan

FA.FA.4004



**Legend**

**Easements**

- - - 33' Section Line Easement
- Public Access Easement
- - - Perpetual ROW
- · · Well and Water Distribution Line
- Well

Cheechako Drive

Chatanika Drive

.4004  
Lot 1  
2.051 Acres

FA.FA.4002

University House

Gold Dust Drive

Yankovich Road



100

Feet

LAND MANAGEMENT  
December 2018

Photo Source : GeoNorth

Meridian Township Range  
F 1N 1W

Fairbanks D-2 (USGS)