

DATE FEBRUARY 13, 2009

**U.S. SURVEY  
No. 13864, ALASKA**  
Retracement of  
Homesite No. 83,  
and Survey

This plat contains the entire survey record.

Limiting Boundaries of the Tongass National Forest, Homesite No. 83, was surveyed by C.M. Archbold and B.R. Aikens, Forest Rangers, in 1932.

U.S. Survey No. 2317, was surveyed by Chas. P. Seelye, U.S. Surveyor, in 1936.

This survey was executed by Thomas B. O'Toole, Cadastral Surveyor, October 18 through October 19, 2007. In accordance with the specifications as set forth in the Special Instructions dated September 5, 2007, approved September 6, 2007 and Assignment Instructions dated September 20, 2007.

Field assistant was:

Michael R. Stephens, Land Surveyor

Area: 4.81 Acres

Measurements were made with Global Positioning System (GPS), utilizing static relative and real time kinematic positioning techniques, in conjunction with conventional instruments. Distances are horizontal distances reduced to their sea level equivalent and reported in the chain unit. Azimuth refer to the true meridian.

The geographic position for the witness corner for corner No. 1, is:

Latitude: 55° 17' 39.79" N.

Longitude: 131° 28' 17.51" W.  
NAD 83 (CRS96) (EPOCH 2003)

and the geographic position as determined from a tie to USLM S2517, is:

Latitude: 55° 17' 37" N.

Longitude: 131° 28' 11" W.  
(NAD 27)

The mean magnetic declination was obtained using National Geodetic Survey declination calculator, based on the International Geomagnetic Reference Field (IGRF).

This survey is situated approximately 8 miles southeast of Ketchikan, Alaska, in Township 76 South, Range 92 East, Copper River Meridian, Alaska.

The land is vegetated by spruce, hemlock, cedar and birch timber.

Access to the survey was by boat.

UNITED STATES DEPARTMENT OF THE INTERIOR  
BUREAU OF LAND MANAGEMENT  
Anchorage, Alaska

The survey represented by this plat, having been correctly executed in accordance with the requirements of law and the regulations of this Bureau, is hereby accepted.

For the Director

*John Simola* November 3, 2008  
Date

Deputy State Director for Cadastral Survey, Alaska

(A)

The point for the original witness cor. meander cor. for corner No. 1, Homesite No. 83, determined at record distance from the original bearing trees, there is no evidence of the original wood post, from which the original bearing trees

A hemlock, 8 ins. diam, bears N. 85° W., 25 lks. dist., mkd. with a full headed blaze. (Record; N. 85° W.)

A cedar, 25 ins. diam, bears N. 25 1/2° W., 18 lks. dist., mkd. with WMC visible on a partially headed blaze. (Record; N. 22° W.)

This point was not monumented due to the high likelihood of the monument eroding away due to surf action.

(B)

Set a stainless steel post, 28 ins. long, 2 1/2 ins. diam., 24 ins. in the ground, in a mound of stone, 2 ft. base to the top of brass cap mkd. as shown, from which

The wedge of a rock outcrop showing, 20x18x17 ins. out of the ground, up the hillside above the stainless steel post, bears N. 9° W., 8 lks. dist., mkd. with 2 in. lettering XBO.

Deposit a magnet in a white plastic case at the base of the stainless steel post.

(C)

Corner No. 4, of Homesite No. 83, found a wood post, 4 ins. diam., 60 ins. long, firmly set, projecting 36 ins. above the ground, top of post is rotted, no marks were visible, from which the original bearing trees

A cedar, 40 ins. diam., bears N. 80° E., 20 lks. dist., mkd. with a full headed blaze. (Record; 12 lks. dist.)

A hemlock, 11 ins. diam., bears S. 25° W., 18 lks. dist., mkd. with a full headed blaze.

This point will now function as corner No. 2, U.S. Survey 13864.

At the corner point

Set a stainless steel post, 28 ins. long, 2 1/2 ins. diam., 22 ins. in the ground, in a collar of stone, 1 ft. diam., with brass cap mkd. as shown

Deposit a magnet in a white plastic case at the base of the stainless steel post.

Place original wood post alongside stainless steel post.

(D)

Corner No. 3, of Homesite No. 83, found a wood post, 3 1/2 ins. diam., 48 ins. long, loosely set, projecting 24 ins. above the ground, top of post is rotted, no marks were visible, from which the original bearing trees

A hemlock, 10 ins. diam., bears S. 2° W., 17 1/2 lks. dist., mkd. with a full headed blaze. (Record; 12 lks. dist.)

A spruce, 27 ins. diam., bears N. 17 1/2° W., 12 lks. dist., mkd. with a full headed blaze.

This point will now function as corner No. 3, U.S. Survey 13864.

At the corner point

Set a stainless steel post, 28 ins. long, 2 1/2 ins. diam., 20 ins. in the ground, with brass cap mkd. as shown, from which

A cedar, 12 ins. diam., bears S. 33° E., 21 1/2 lks. dist., mkd. 513864 BT.

Deposit a magnet in a white plastic case at the base of the stainless steel post.

Place original wood post alongside stainless steel post.

(E)

Set a stainless steel post, 28 ins. long, 2 1/2 ins. diam., 22 ins. in the ground, in a mound of stone, 2 ft. base to the top of brass cap mkd. as shown, from which

A red cedar, 10 ins. diam., bears N. 9 1/2° E., 68 lks. dist., mkd. X BT.

A cedar, 14 ins. diam., bears S. 59° E., 54 1/2 lks. dist., mkd. X BT.

(F)

Corner No. 2, Homesite No. 83, a meander cor.; determined based on a record bearing on line 2-3 at intersection with the meander line, there is no remaining evidence of the original monument.

This point will now function as corner No. 4, U.S. Survey 13864, a meander cor.

This point was not monumented due to the high likelihood of the monument eroding away due to surf action.

(G)

Found a brass cap, 3 ins. diam., firmly set on top of a large rock outcrop, mkd. USLM # 2317 1936.

The original bearing tree was not searched for, the brass cap is approximately 6 feet high vertically above the surface of the water, at mean high tide.

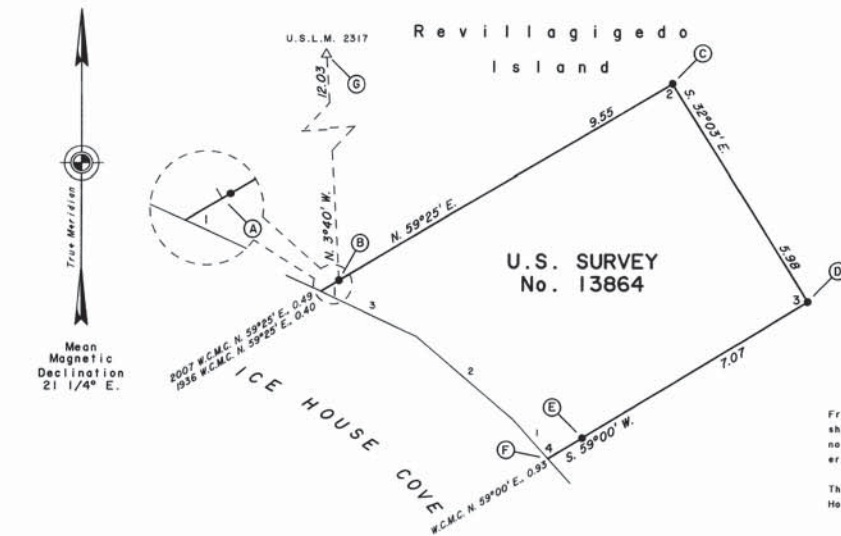
**MEANDERS**

From the true point for cor. No. 4, a meander cor. on the shore of Ice House Cove, of the line of mean high tide; not monumented due to the high likelihood of the monument eroding away due to surf action.

Thence northwesterly with the meanders of the shore of Ice House Cove of the line of mean high tide.

1. N. 42°25' W., 1.25 chs.
2. N. 49°41' W., 2.95 chs.
3. N. 65°17' W., 2.47 chs.

At end of course, the true point for cor. No. 1, a meander corner; not monumented due to the high likelihood of the monument eroding away due to surf action.



I, Thomas B. O'Toole, HEREBY CERTIFY upon honor that in pursuance of Special Instructions dated September 5, 2007, I have executed the survey depicted on this plat in strict conformity with said Special Instructions, the Manual of Instructions for the Survey of the Public Lands of the United States, 1973, and in the specific manner described on this plat.

Oct-21, 2008 *Thomas B. O'Toole*  
Date Cadastral Surveyor

